

離岸風場開發 海洋地球物理 全球測繪

全球測繪科技股份有限公司

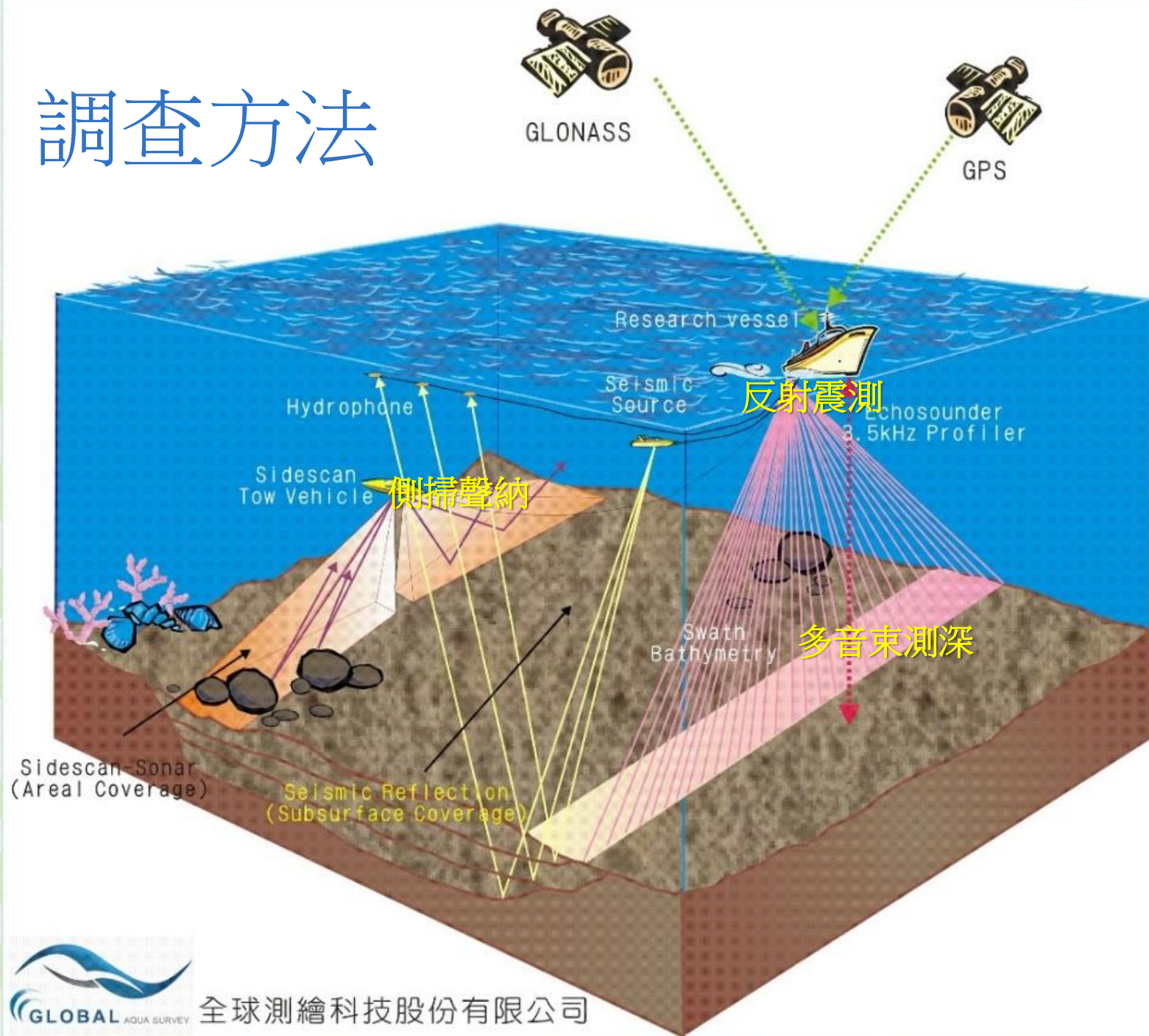
周靜歆

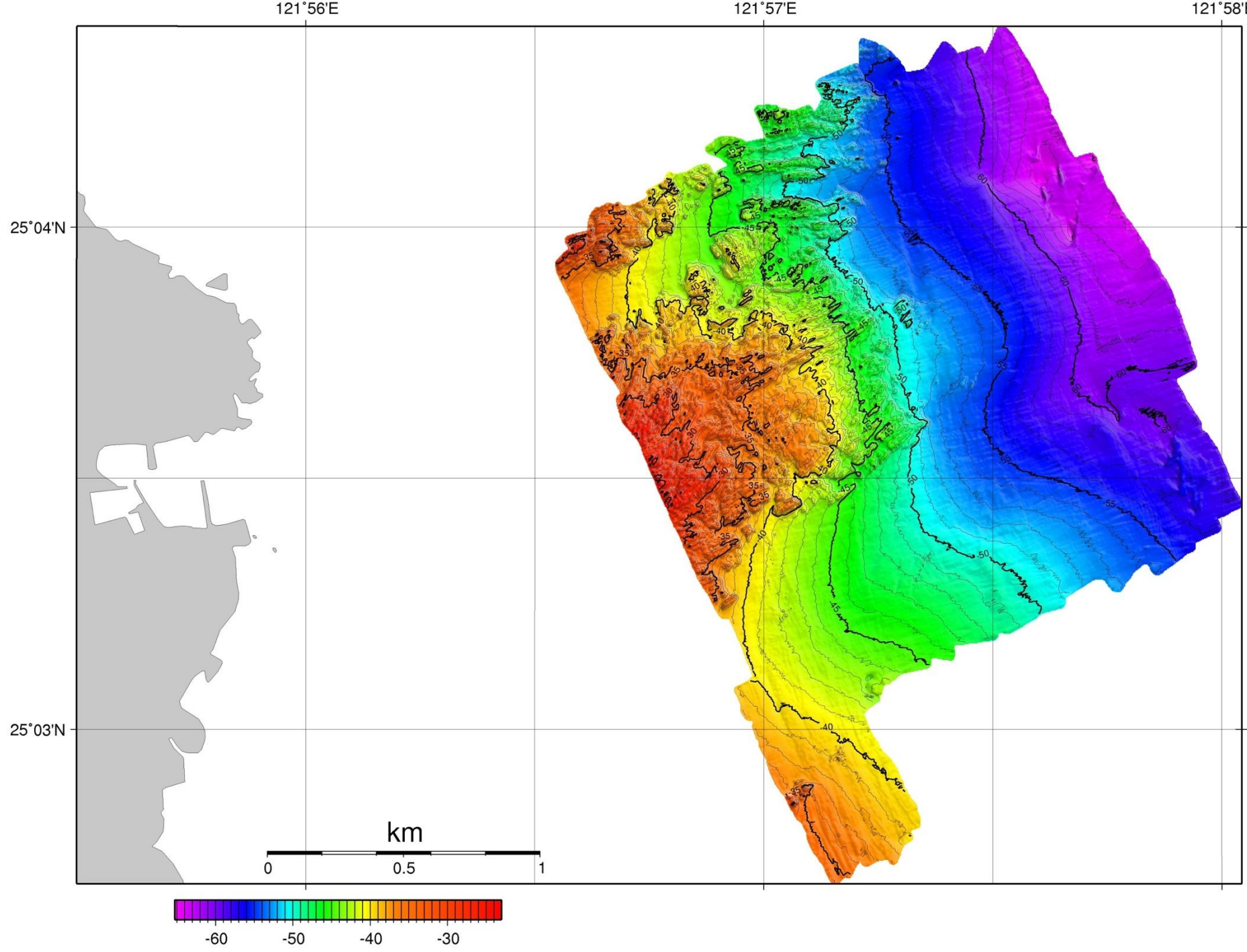
海球測繪物探 有限公司

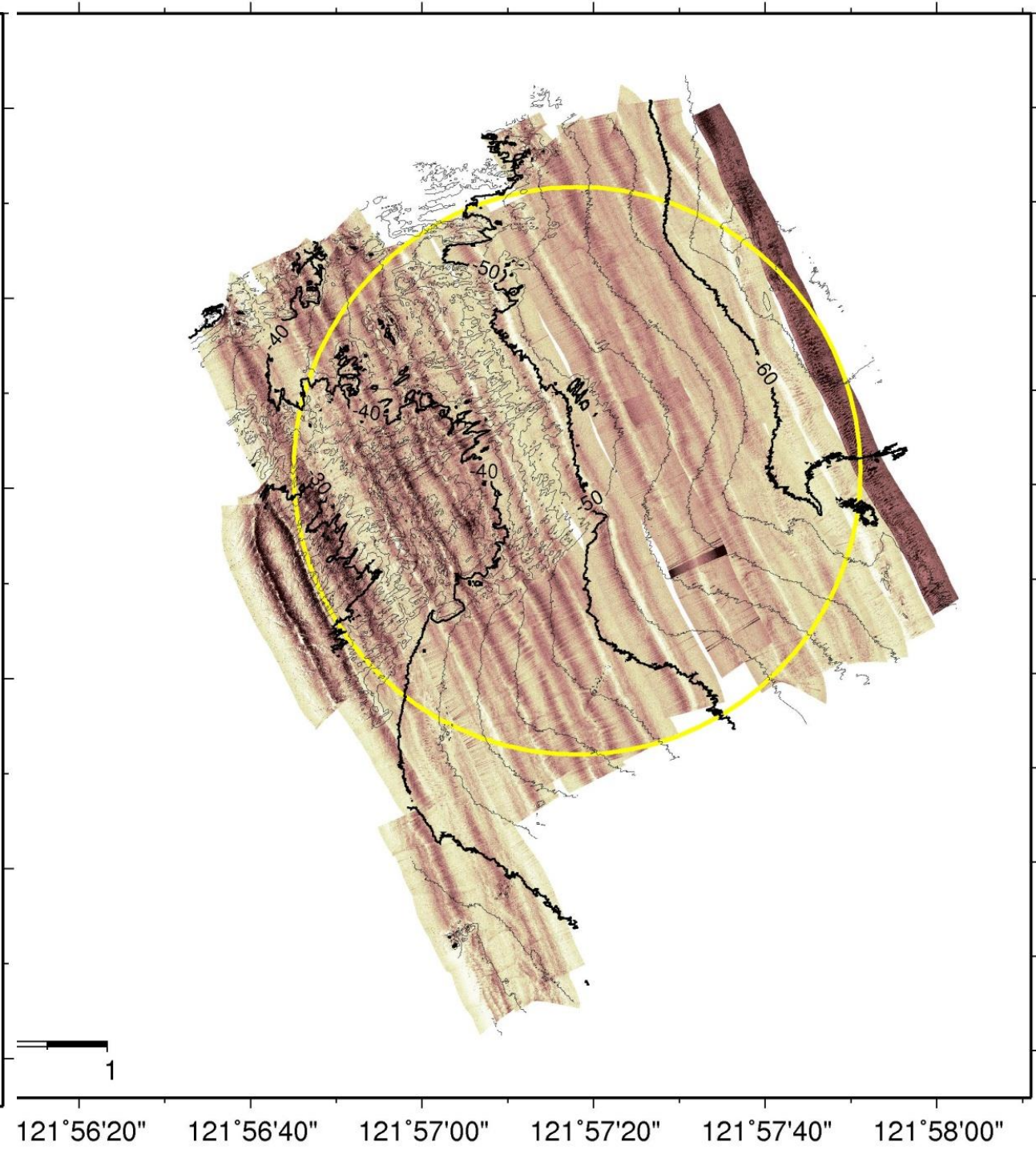
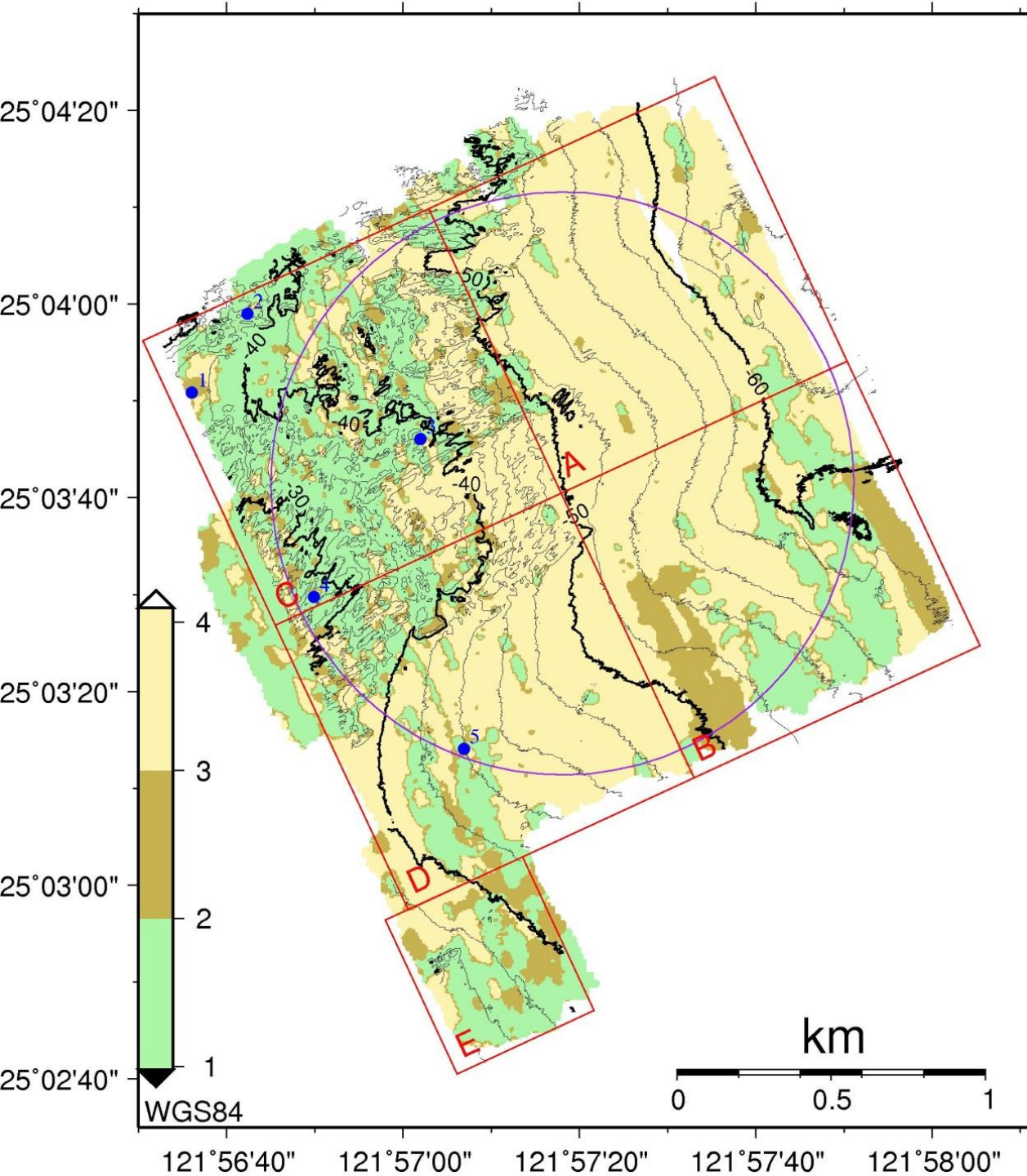
測繪業執照

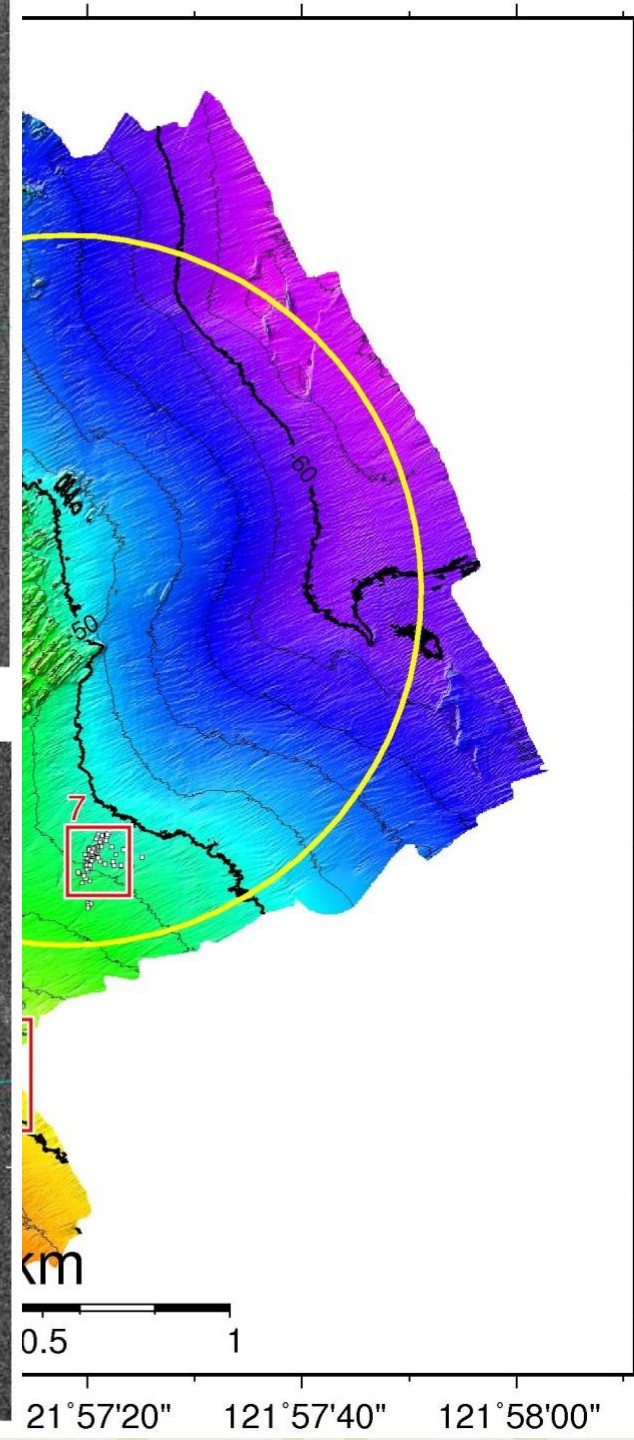
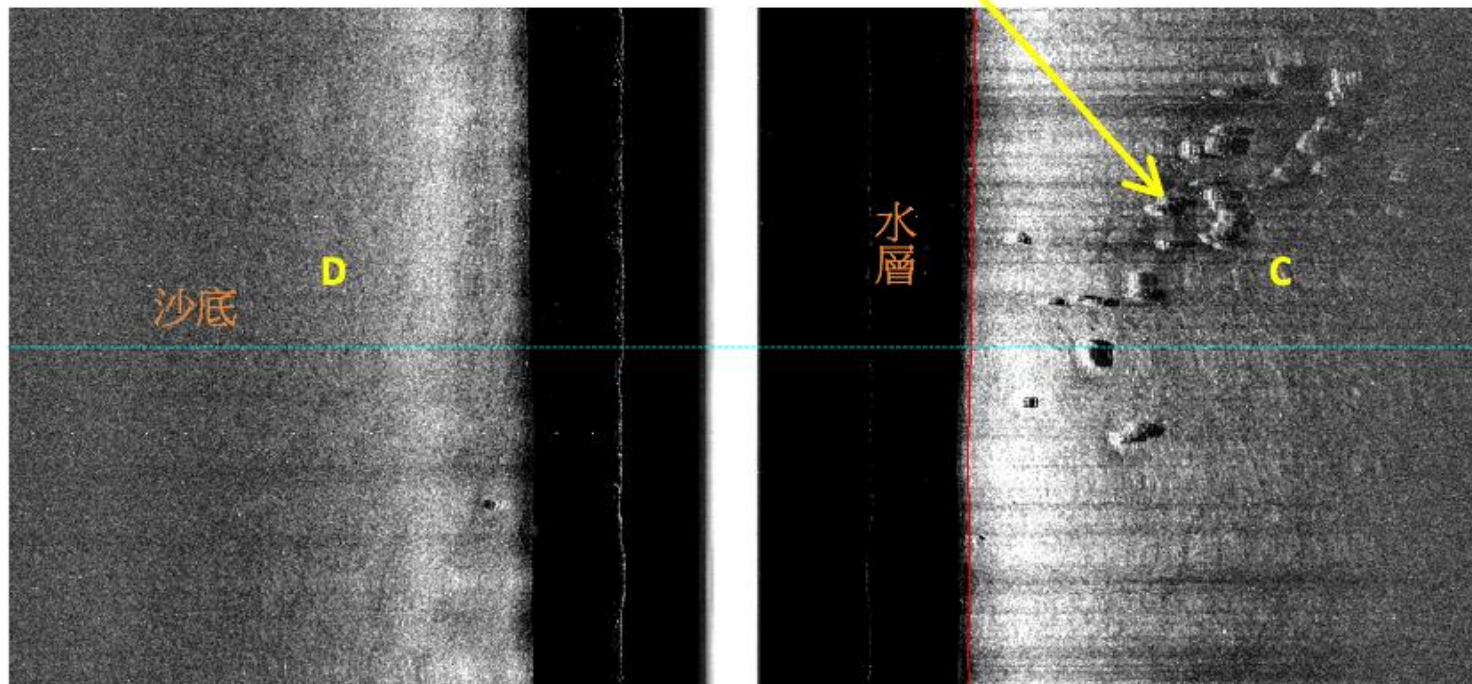
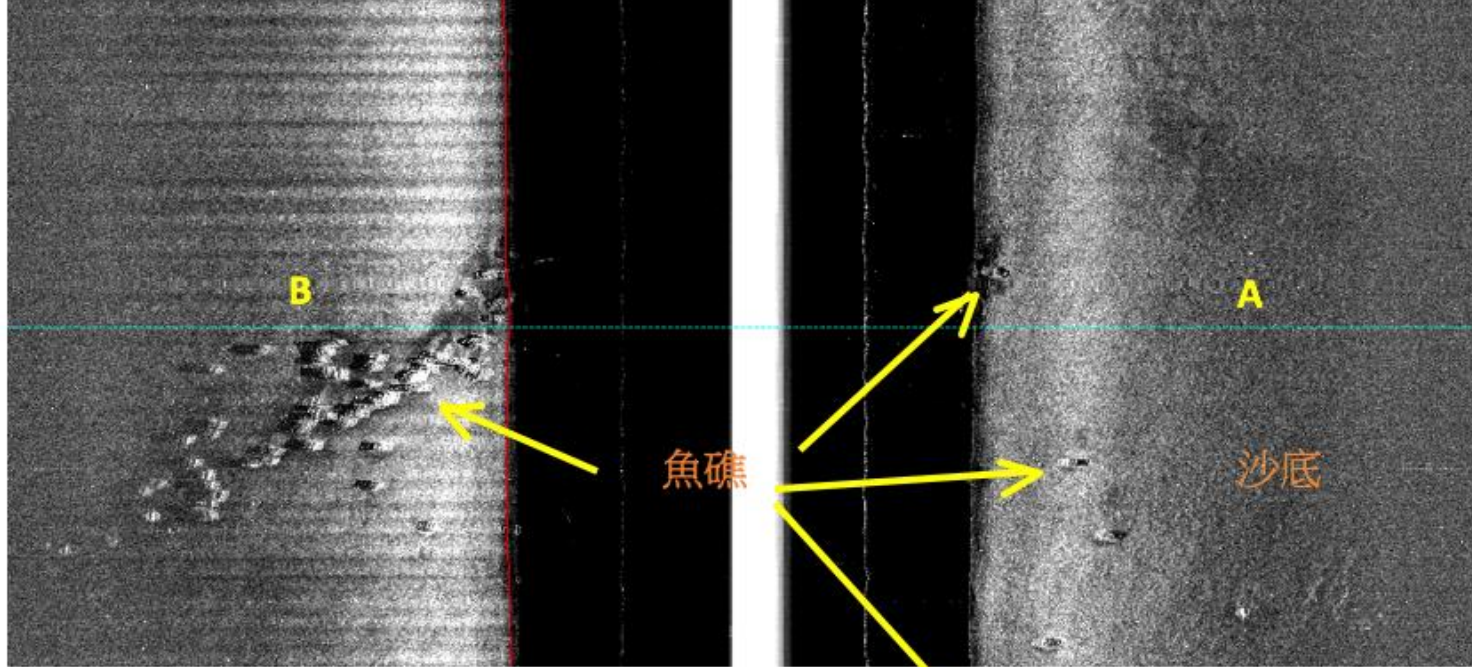
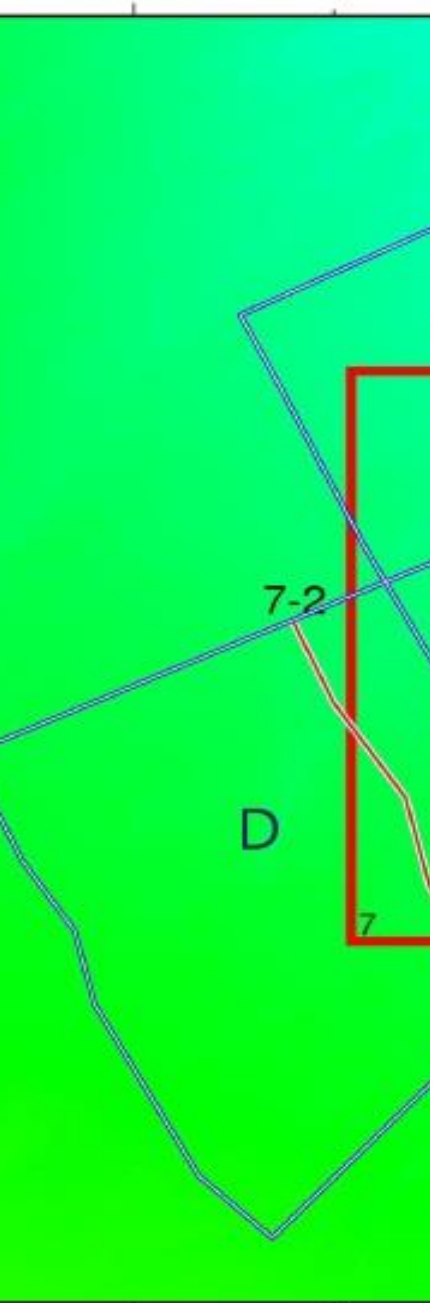
海洋地質及地球物理專業

調查方法









121°57'16"

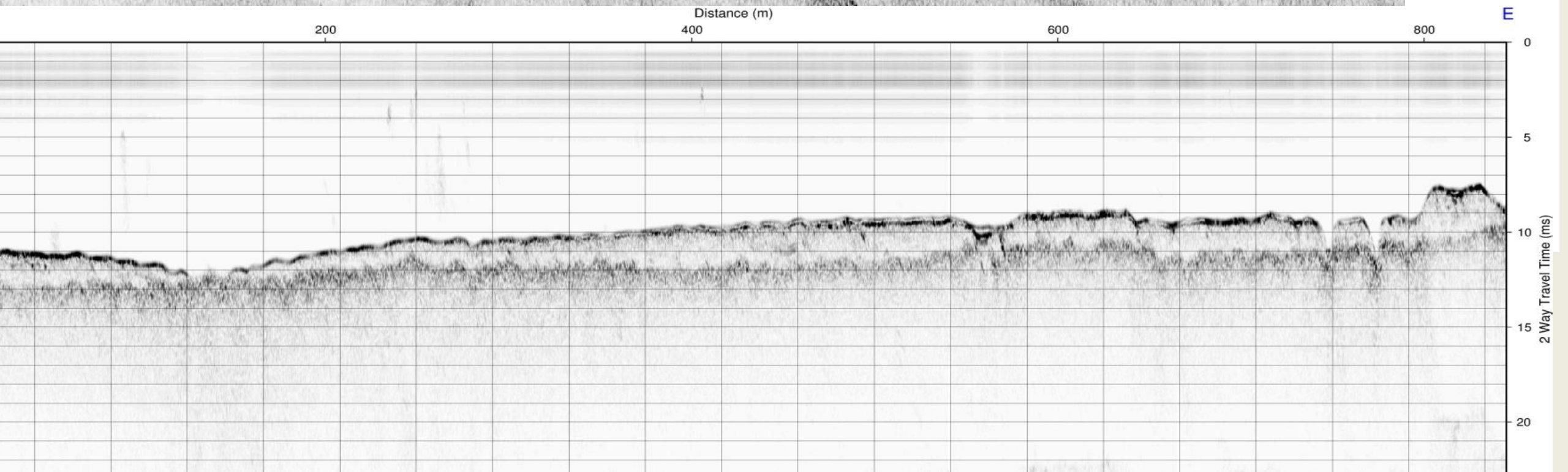
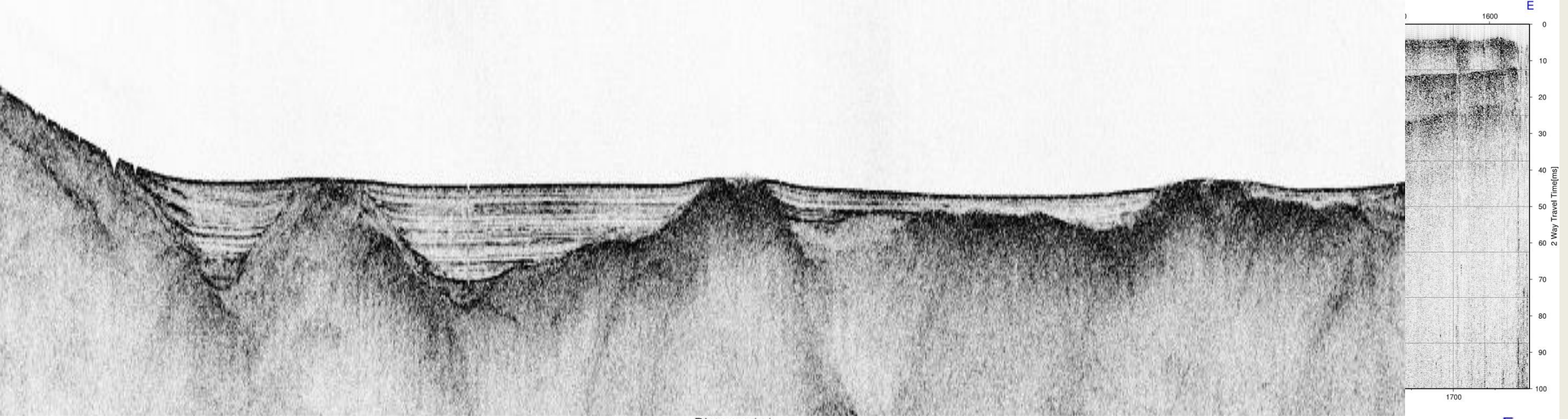
0.5

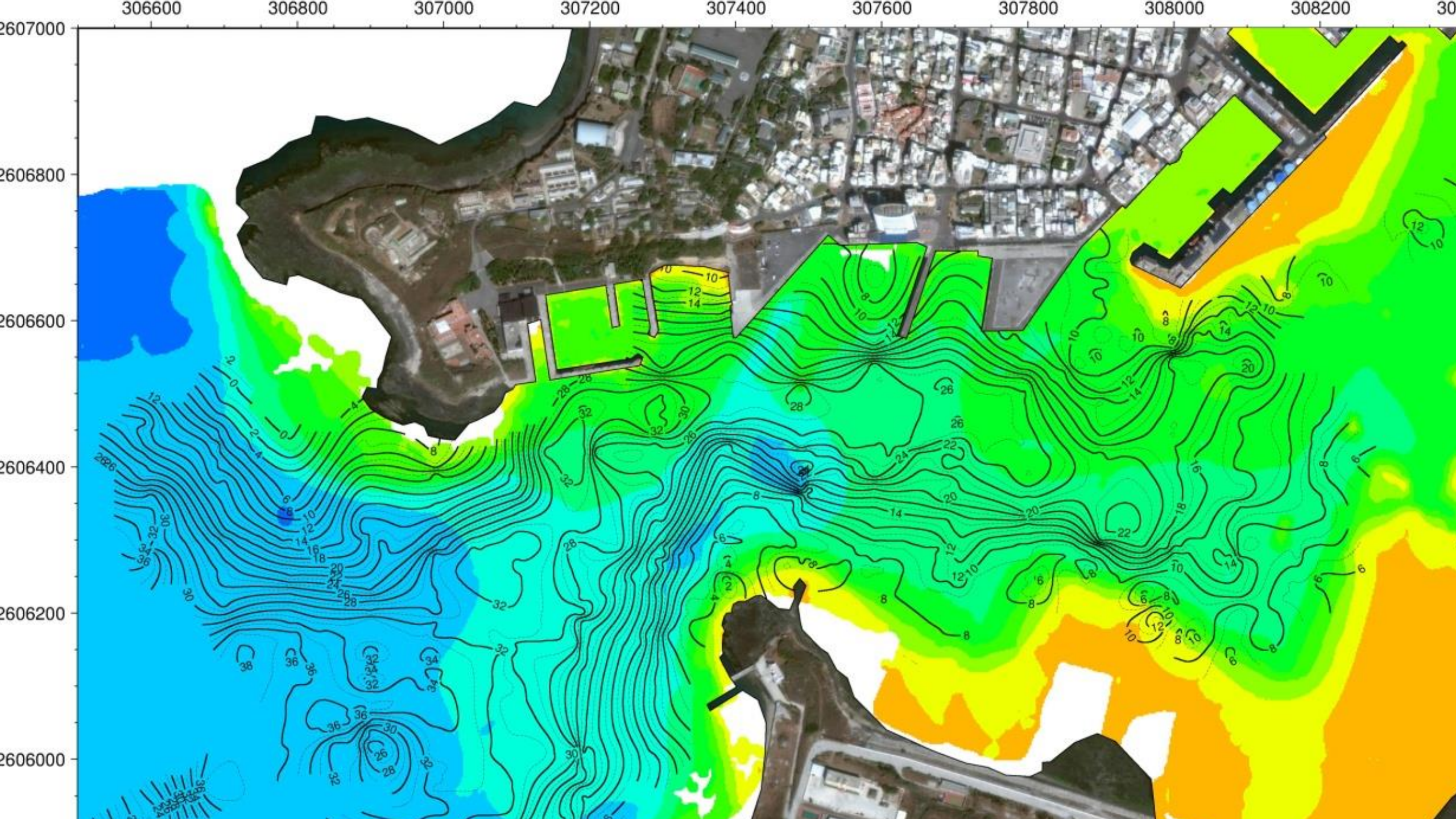
1

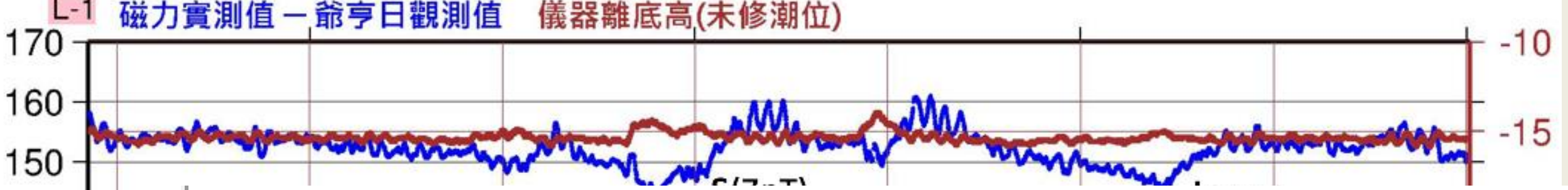
21°57'20"

121°57'40"

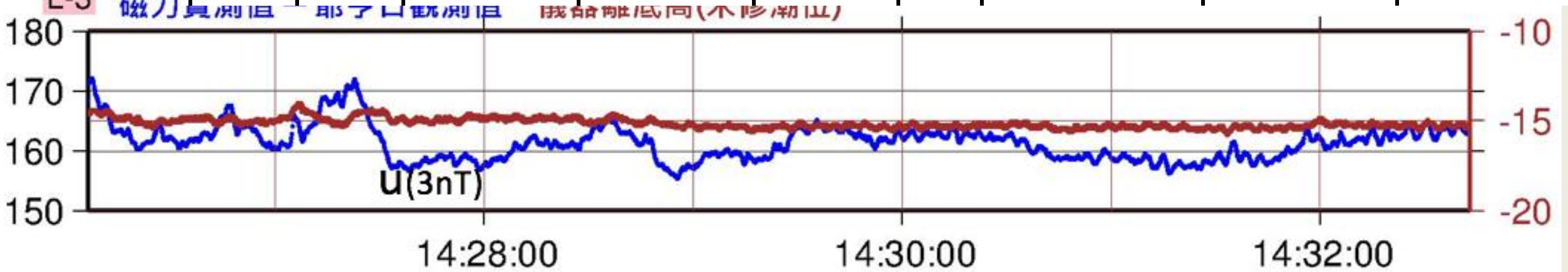
121°58'00"

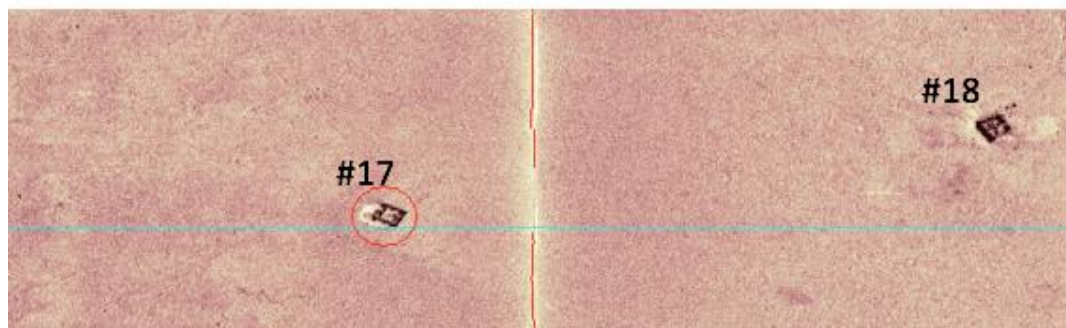
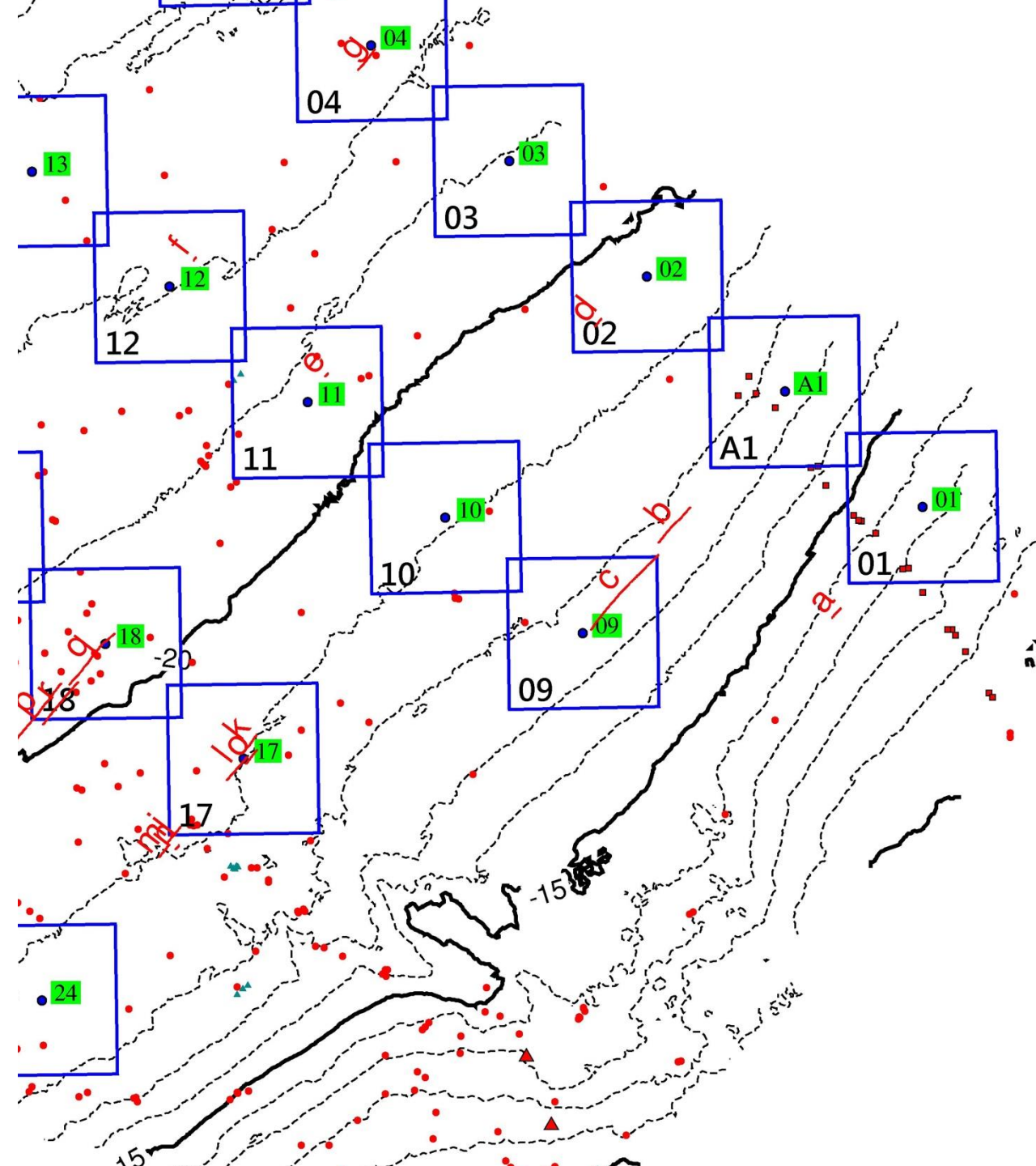
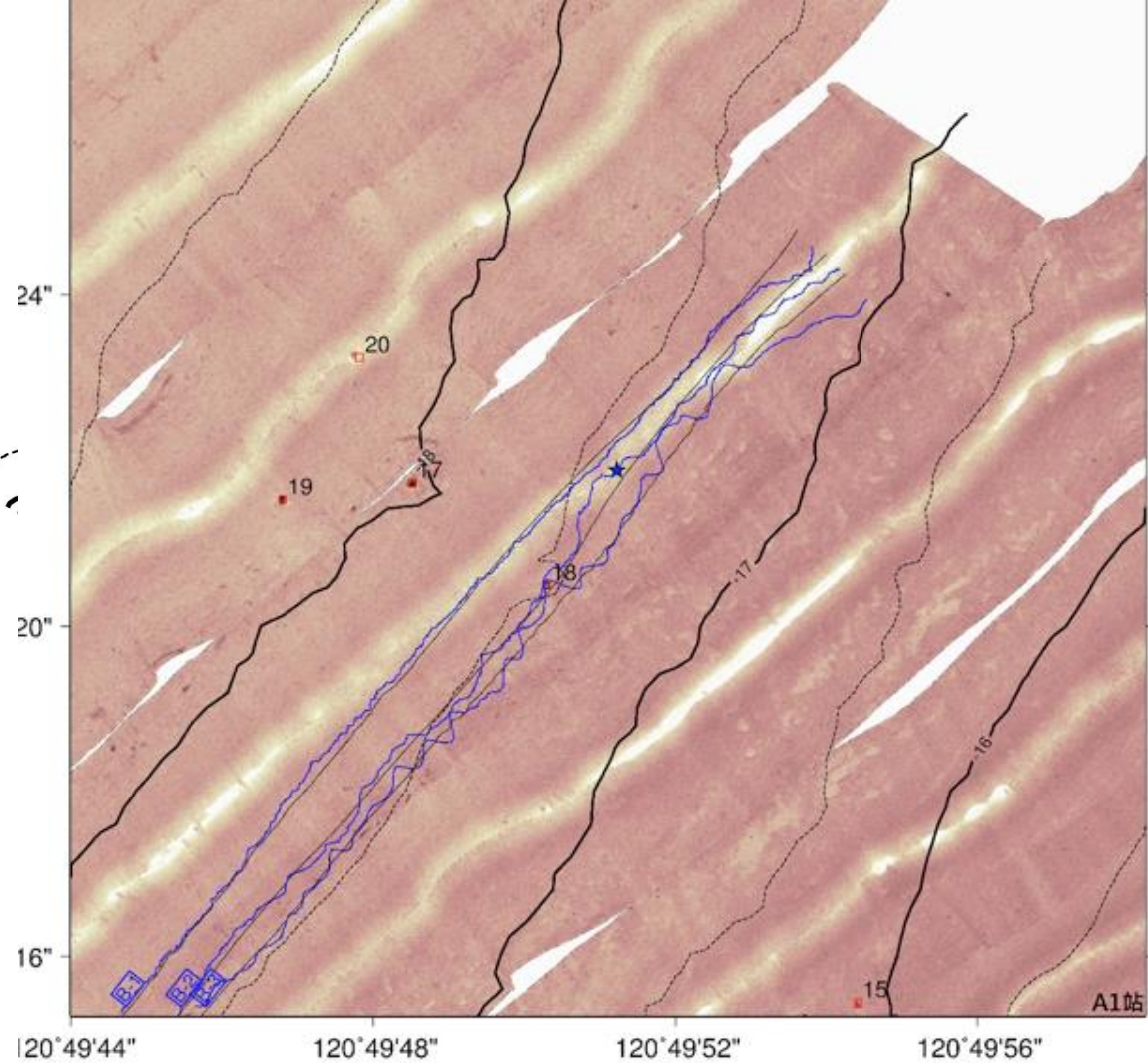


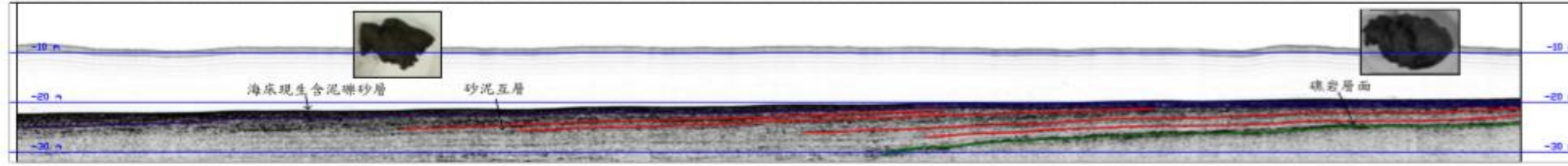
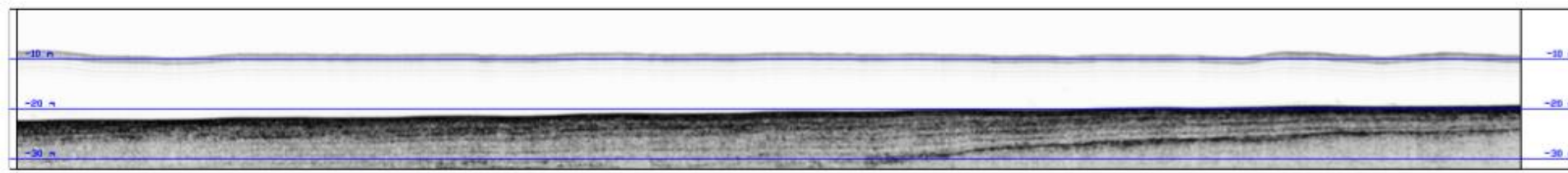
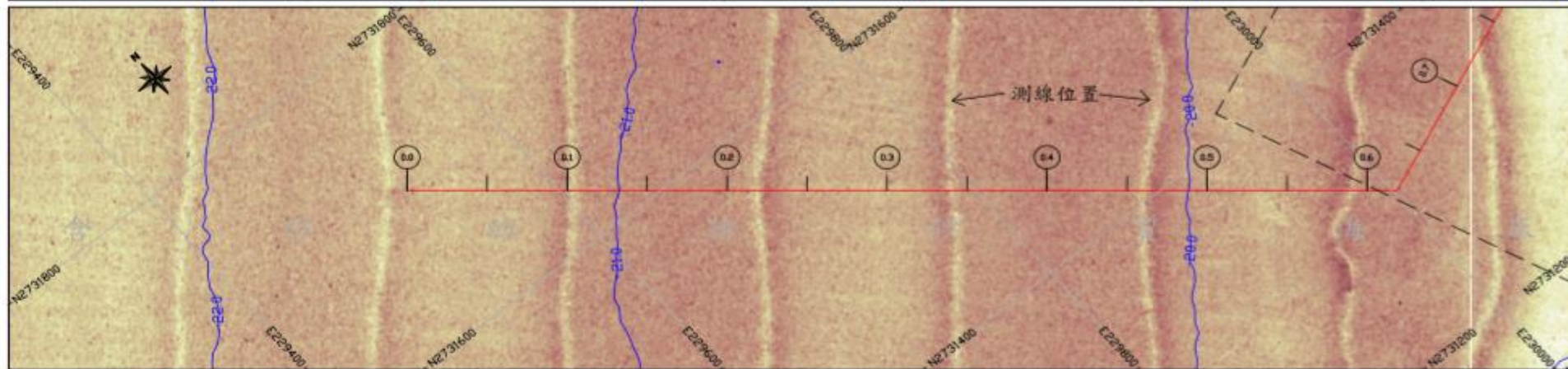




目標	測線	開始時間	結束時間	歷時 (秒)	nT	位置座標		100 公尺距 離內風機 站位編號
						經度	緯度	
a	A-2	16:13:10	16:13:20	10	3	120.8322425	24.7007289	n/a
b	B-2	16:59:30	17:00:10	40	5	120.8279543	24.7028626	n/a
c	B-3	16:34:00	16:35:30	90	4	120.8266068	24.701272	09
d	C-1	16:05:40	16:05:50	10	4	120.8259689	24.7077419	02



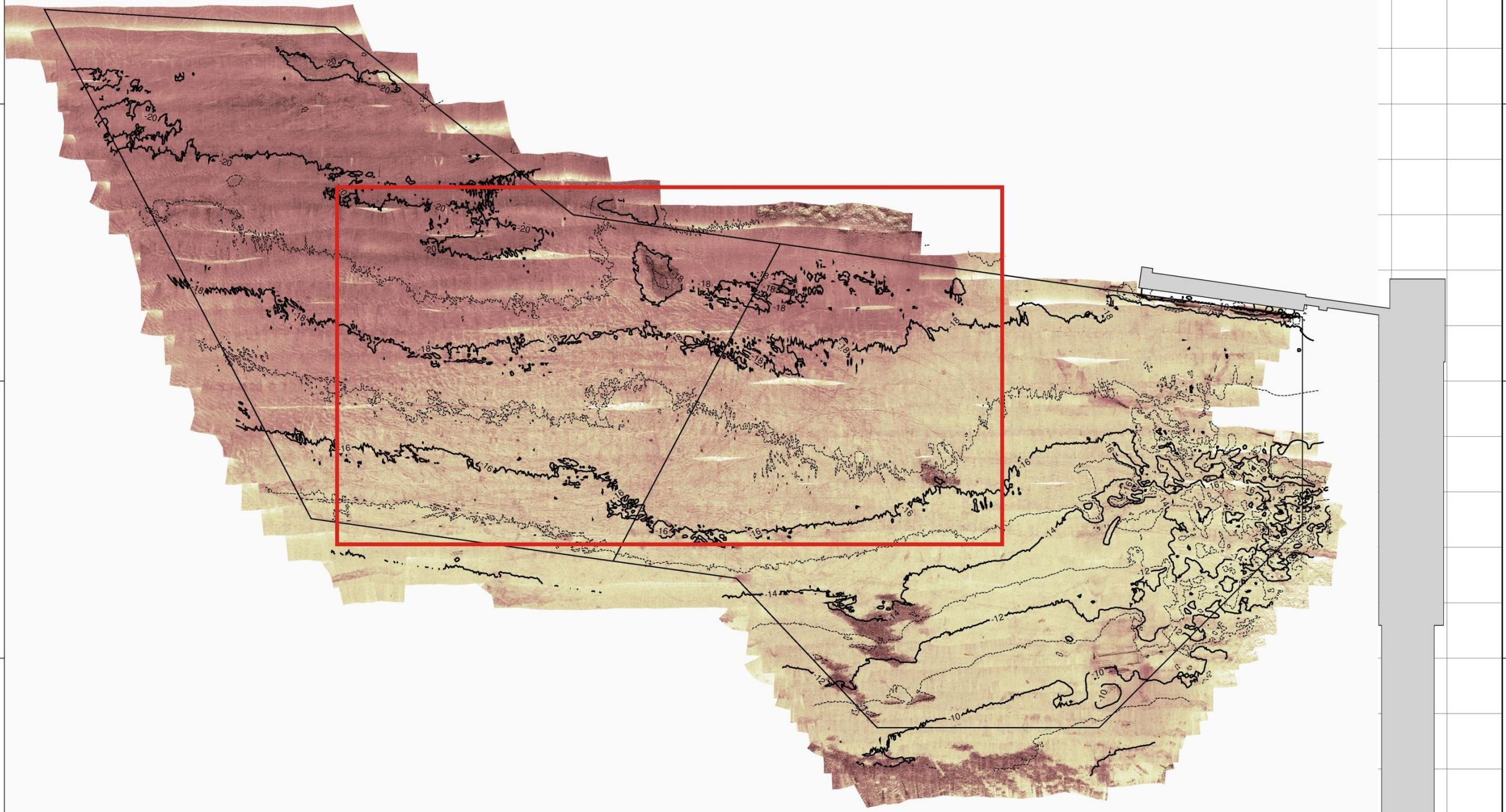




2781000

2780500

2780000



F & Q
